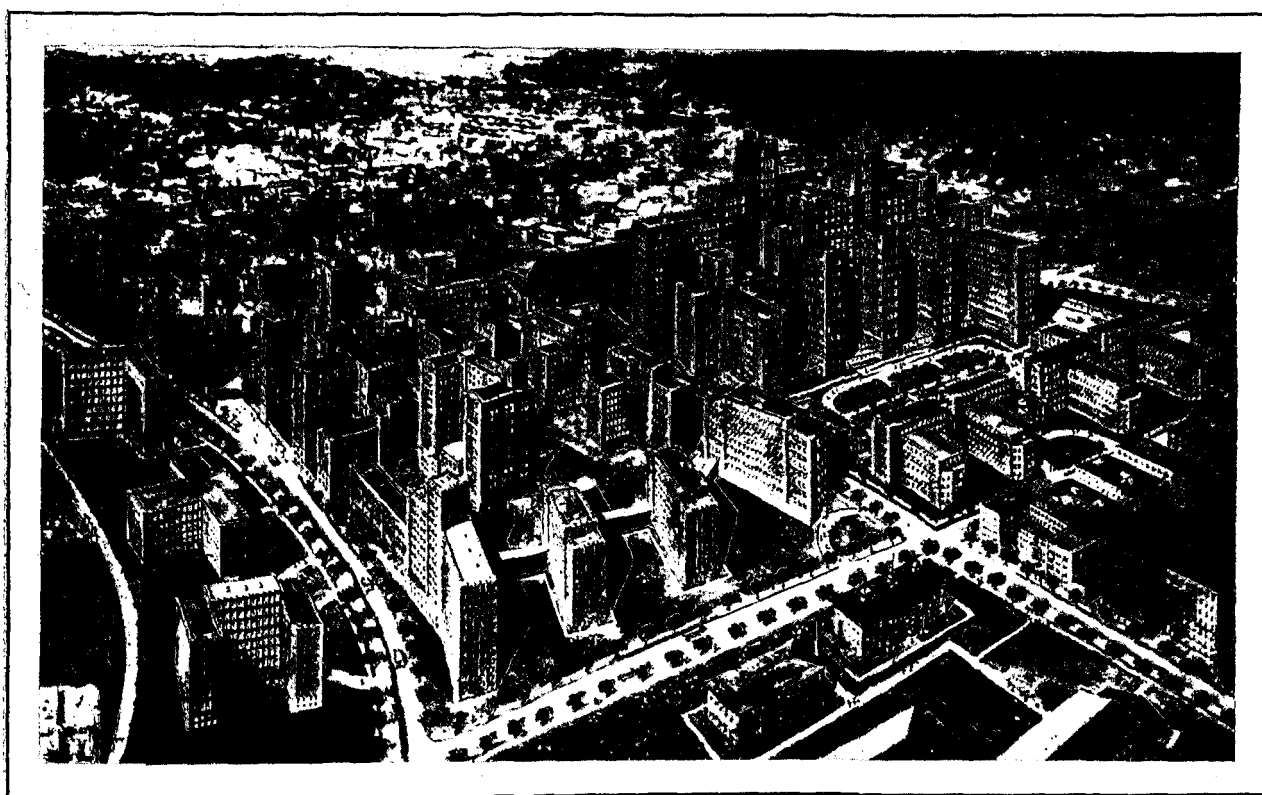


PROPOSED NEW YORK MEDICAL CENTRE.

The accompanying architect's plan of the proposed New York Medical Centre for which we are indebted to "The World's Health, Monthly Review of the League of Red Cross Societies," together with the official description printed below, is not only extraordinarily interesting from the completeness of the grouping proposed, but because it includes the Anna C. Maxwell building (the Presbyterian Hospital School of Nursing Residence). Three-fifths of the entire group of buildings are now under construction or in the plan stage. The large group of buildings, to the right centre of the picture, will house the College of Physicians and Surgeons of Columbia University, the Presbyterian Hospital, the Squier Urological Clinic, the Sloan Hospital for Women, the Vanderbilt Clinic and the School

Miss Anna C. Maxwell, M.A., one of the early and most honoured leaders of Nursing in the United States of America, entered the Boston City Hospital Training School for Nurses, then in charge of Miss Linda Richards, in 1876, and after graduation started a Training School at the Montreal General Hospital, Canada. Her principal work has been in connection with the Presbyterian Hospital, New York City, from which in 1892 she accepted a call to establish a School of Nursing. It is written of her that "from her earliest years a leader, gifted with a magnetic and winning personality, she is sympathetic, just and generous. An inspiring teacher, a wonderful organiser and promoter, with an insight into the great possibilities of the Nursing Profession, ever ready to overcome difficult obstacles, she has been a power as well as a pioneer."



THE ARCHITECTS' PLAN FOR THE PROPOSED NEW YORK MEDICAL CENTRE.

of Dental and Oral Surgery of Columbia University, the Harkness Pavilion (for private patients), all nearing completion and in the extreme right wings will be the Babies' Hospital, for which plans are now being drawn. To the south of this main group, in the row of four small buildings, it is planned to house speciality hospitals. Two lesser groups of buildings are being separated by Riverside Drive, the curved street to the left of the picture. The larger group, on the right of Riverside Drive, includes the New York State Psychiatric Institute and Hospital, the building with the tall tower. To the right of this can be seen the upper portion of the Neurological Institute of New York, and, to the south, with its two wings facing Riverside Drive, is the Anna C. Maxwell building, which is the Presbyterian Hospital School of Nursing Residence. Other buildings in this group will be speciality hospitals, dormitories, or will house the personnel. Across Riverside Drive is the proposed Social Centre and Gymnasium, with the building for graduate nurses and other graduate personnel.

APPOINTMENTS.

MATRON.

St. Leonards's Hospital, Shoreditch, London.—Miss M. Pilkington, S.R.N., has been appointed Matron. She was trained at the Poor Law Hospital, Coventry, and has been Assistant Matron at the Poor Law Hospital, Mayday Road, Croydon.

Manfield Orthopædic Hospital, Northampton.—Miss M. Watt has been appointed Matron. She was trained at the Western Infirmary, Glasgow, and has since been Sister at Stonehouse Sanatorium, Ward and Theatre Sister at the Royal Hospital for Sick Children, Glasgow, Sister in Charge at the Prince of Wales' Orthopædic Hospital, Cardiff, Assistant Superintendent at the Royal Hospital for Sick Children, Aberdeen, and Temporary Matron at the Sanatorium, Nordrach-on-Dee.

Ikeston Hospital.—Miss D. W. Swanwick, S.R.N., has been appointed Matron. She was trained at the General Hospital, Nottingham, and has since been Sister at the Derby Children's Hospital, Sister at the North Middlesex Hospital, London, and

[previous page](#)

[next page](#)